

**HOPE** TECHNICAL DEVELOPMENTS Ltd

**PROTECTING YOUR VAN FROM REAR DAMAGE**

[www.safetbar.co.uk](http://www.safetbar.co.uk) Tel: 01344 624855

**safe-T-bar**

High Street, Ascot, Berkshire, SL5 7HP



STEP 1



135 mm Mark  
Hole Position

Please read all 8 steps before  
starting the modification

STEP 2

Pilot hole drilled



### STEP 3

Remove factory  
Sensors and fit  
Grommets  
supplied

Drill hole  
28mm  
Diameter



## STEP 4

Ensure hole  
position is  
central



STEP 5





STEP 6

Mark out nearside and  
repeat process

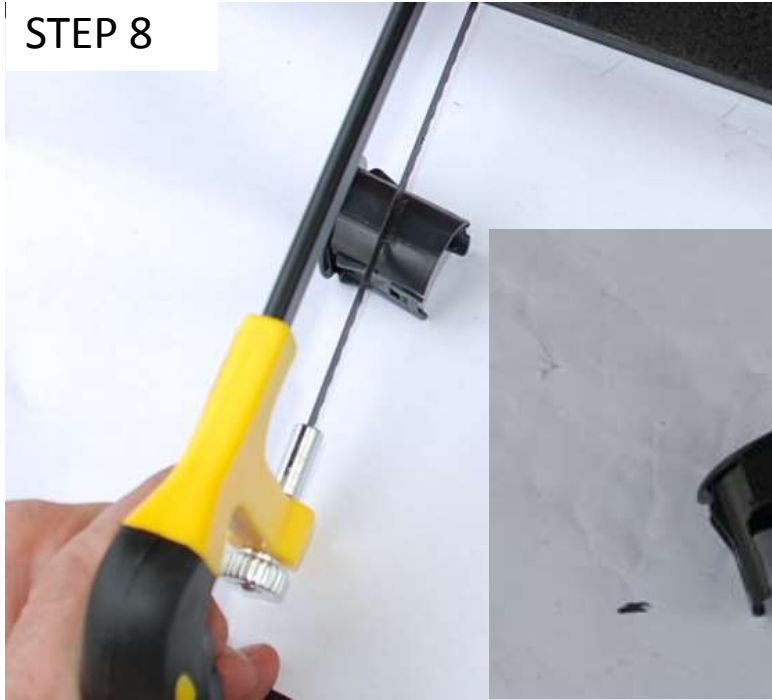


## STEP 7

Ensure Sensors are refitted in the same orientation as originally fitted



## STEP 8



The nearside sensor housing will need modification to allow the sensor cable plug to exit on the opposite side to original.



This is achieved by cutting a new slot on the opposite side of the housing as seen in the picture

If you need advise please telephone 01344 624855